

# Instruction Manual (ML55 PA)

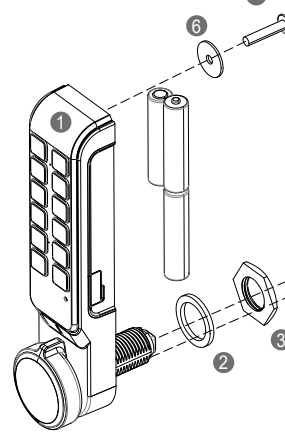
## ● Package contained



- ① ML55PA lock x1
- ② Rubber ring washer x1
- ③ M6 nut x1
- ④ Cam governor (limits cam to 90°) x1 Cams
- ⑤ x 2 (1 flat, 1 offset)
- ⑥ M4 washer x2
- ⑦ Bolts x5
  - ① M6 x 8 cam fixing
  - ② M4 x 10 upper fixing for 1-5mm door
  - M4 x 20 upper fixing for 10-15mm door
  - M4 x 25 upper fixing for 15-20mm door
  - M4 x 30 upper fixing for 20-25mm door

※ Power : 4.5V (AAA 1.5V x 3)

## ● Installation

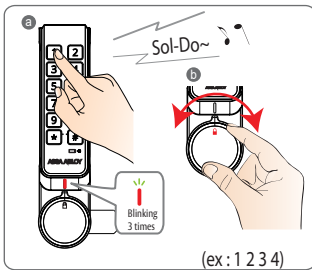


### Caution

- The battery should only be used with the specific type of batteries recommended by the manufacturer. It may cause damage or malfunction on the product if incorrect batteries are used.
- Dispose of used batteries according to the instruction.

## ● How to use the User Code (Public mode)

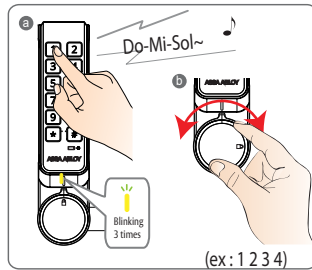
### Lock the door



- a Close the door and press the User Code - Blinking Red LED 3 times and melody sound "Sol-Do~"
- b Turn the handle to the lock position

Number of Passcode	How to register
4 Digit	Press 4-digit passcode
5 to 12 Digit	Press (C) 5 to 12 Digit + (C)

### Unlock the door

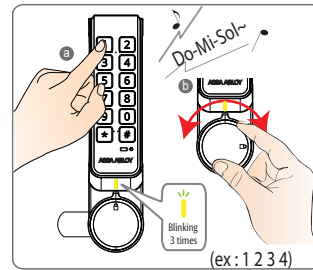


- a Press the User Code - Blinking yellow LED 3 times and melody sound "Do-Mi-Sol~"
- b Turn the handle to the open position and open the door

※ **Public Mode (One Time use)**  
- User pass-code will be erased after unlock and stay open for next user.

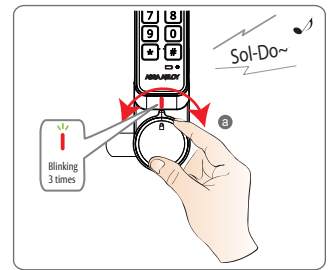
## ● How to use the User Code (Private mode)

### Unlock the door



- a Press the User Code - Blinking yellow LED 3 times and melody sound "Do-Mi-Sol~"
- b Turn the handle to the open position and open the door

### Lock the door



- a Close the door and turn the handle to the lock position

※ **Private Mode (Assigned use)**  
- The lock automatically locked in 3 seconds, just turn the handle to the lock position.

## ● How to use the Master Code

### Important Note

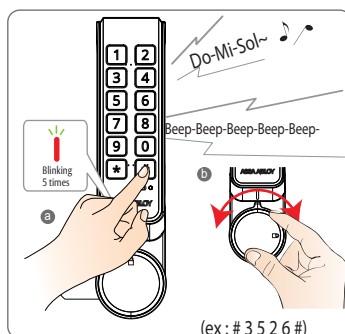
#### Two code levels

Master Code  
Step 1

User Code  
Step 2

Factory set Master Code "3 5 2 6"

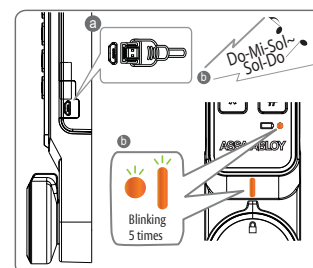
User code will be deleted after use of the Master code.  
Need to set the User code again at private mode.



- a Press (C) + "Master Code" + (C)
  - Melody sound "Do-Mi-Sol~"
  - Unlock the lock with Beep sound 5 times and blinking Red LED 5 times
- b Turn the handle to the open position and open the door

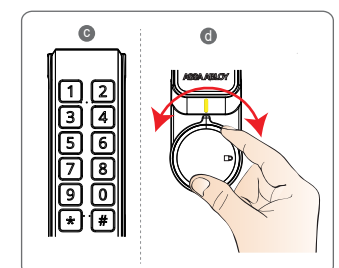
## ● External Power for Emergency

### Step 1



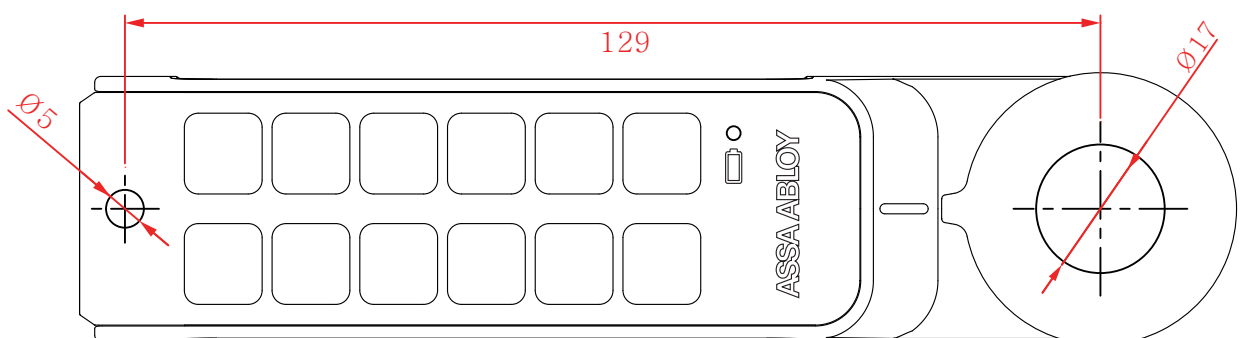
- a Connect standard 5 pin Micro USB cable to the USB Port on the right side of the lock
- b When power is applied, Both LED blinks 5 times with melody sound "Do-Mi-Sol~Sol-Do"

### Step 2



- c Press User Code or Master Code to unlock the lock  
User code will be deleted after use of the Master code.  
Need to set the User code again at private mode.
- d Open the door and change the batteries

## Installation Template



# How to set or change User Code

## ● How to change User code by registered Master Code (Private Mode)

Step 1	Step 2	Step 3	Step 4	Step 5
a Press <b>#</b> button for 4 secs - Yellow LED blinks for 8 secs with beep sound	b Press the "Master Code"	c Press <b>#</b> button - Yellow LED blinks for 8 secs with melody sound "Ra-Si~"	d Press the "User Code"	e Press <b>#</b> button - Blinking Orange LED 5 times with Melody sound "Do Re Mi~" - User Code is set

Example)

• Master code : 3 5 2 6  
• New User code : 3 3 3 3  
→ **# (for 4 seconds)**  
3 5 2 6 #  
3 3 3 3 #

## ● How to change User Code by registered User Code

Step 1	Step 2	Step 3	Step 4	Step 5
a Press <b>*</b> button for 4 secs - Yellow LED blinks for 8 secs with beep sound	b Press current "User Code"	c Press <b>*</b> button - Yellow LED blinks for 8 secs with melody sound "Ra-Si~"	d Press New "User Code"	e Press <b>*</b> button - Blinking Orange LED 5 times with Melody sound "Do Re Mi~" - User Code is set

Example)

• Current User code : 3 3 3 3  
• New User code : 4 4 4 4  
→ **\* (for 4 seconds)**  
3 3 3 3 \*  
4 4 4 4 \*

# How to change the Master Code

Example) • Current Master code : 3 5 2 6  
• New Master code : 5 5 5 5 → **# (for 4 seconds)** 3 5 2 6 \* 5 5 5 5 # 5 5 5 5 #

Step 1	Step 2	Step 3	Step 4	Step 5	Step 6	Step 7
a Press <b>#</b> button for 4 secs - Yellow LED blinks for 8 secs with beep sound	b Press current "Master Code"	c Press <b>*</b> button - Yellow LED blinks for 8 secs with melody sound "Ra-Si~"	d Press New "Master Code"	e Press <b>#</b> button - Yellow LED blinks for 8 secs with melody sound "Ra-Si~"	f Press New "Master Code" one more time	g Press <b>#</b> button - Orange LED blinks 5 times with melody sound "Do-Re-Mi~" - Master Code is set

## How to set other functions of ML55PA

### ■ Delete User Code by Master Code before set other functions

## ● How to switch between Public Mode & Private Mode

## ● How to turn Melody Sound On/ Off

Private Mode	Public Mode	Turn on the sound	Turn off the sound
a Press <b>1</b> , <b>#</b> and <b>0</b> buttons simultaneously for 4 seconds - Yellow LED blinks 3 times with melody sound "Sol-Do~"	a Press <b>1</b> , <b>#</b> and <b>0</b> buttons simultaneously for 4 seconds - Orange LED blinks 2 times with melody sound "Ra-Si~"	a Press <b>1</b> , <b>#</b> and <b>8</b> buttons simultaneously for 4 seconds - Yellow LED blinks 3 times with melody sound "Sol-Do~"	a Press <b>1</b> , <b>#</b> and <b>8</b> buttons simultaneously for 4 seconds - Orange LED blinks 2 times with melody sound "Ra-Si~"

### ※ FCC statement

This device complies with Part 15 of the FCC Rules. Operation is subject to the following two conditions:

- (1) this device may not cause harmful interference, and
- (2) this device must accept any interference received, including interference that may cause undesired operation.

**Caution:** Changes or modifications not expressly approved by the party responsible for compliance could void the user's authority to operate the equipment.

※ This appliance and its antenna must not be co-located or operation in conjunction with any other antenna or transmitter.

This equipment should be installed and operated with minimum distance 20cm between the radiator& your body.



# How to register or use Technician Code

## ● How to register Technician Code (Private / Public Mode)

**Step 1**

a Press 1, # and 5 buttons simultaneously for 4 seconds  
- Yellow LED blinks 2 times with melody sound "Sol-Do~"

**Step 2**

b Press the "Master Code"

**Step 3**

c Press # button  
- Orange LED blinks for 8 secs with melody sound "Ra-Si~"

**Step 4**

d Press the "Technician Code"

**Step 5**

e Press # button  
- Blinking Orange LED 5 times with Melody sound "Do-Re-Mi~"  
- Technician Code is set

**Example** · Master code : 3 5 2 6 → 15 # (for 4 seconds) 3 5 2 6 # 1 2 3 4 5 6 #  
· Technician code : 1 2 3 4 5 6

※ Lock must be opened by Master code before register a Technician code.

## ● How to use Technician Code (Private / Public Mode)

**Step 1**

a Press 6, # buttons simultaneously for 2 seconds  
- Yellow LED blinks for 8 secs with beep sound

**Step 2**

b Press the "Technician Code"

**Step 3**

c Press # button  
- Yellow LED blinks 3 times with beep sound  
- Lock is opened

**Step 4**

d Close your cabinet and turn the cam to lock position.

**Step 5**

e Lock is locked  
- Red LED blinks 3 times with melody sound "Sol-Do~"

**Example** · Technician code : 1 2 3 4 5 6 → 6 # (for 2 seconds) 1 2 3 4 5 6 #

※ Be aware of using Technician Code. Technician Code can be used without trace even if the cabinet is in use

## How to set Technician code and Timer Opening of ML55PA

### ● How to set Technician code On / Off

**Technician code On**

a Press 1, # and 5 buttons simultaneously for 4 seconds  
- Yellow LED blinks 2 times with melody sound "Sol-Do~"

**Technician code Off**

a Press 1, # and 5 buttons simultaneously for 4 seconds  
- Orange LED blinks 2 times with melody sound "Ra-Si~"  
- Remove the existing technician code

### ● How to set Timer Opening On / Off ※ Available Only Public Mode

**Timer opening On**

a Press 7, # buttons simultaneously for 2 seconds  
- Yellow LED blinks for 8 secs with beep sound

b Press the "Master Code" and # button

c Press 0 to 24 and # button for timer setting  
- Yellow LED blinks 3 times with melody sound "Sol-Do~"

**Timer opening Off**

a Press 7, # buttons simultaneously for 2 seconds  
- Yellow LED blinks for 8 secs with beep sound

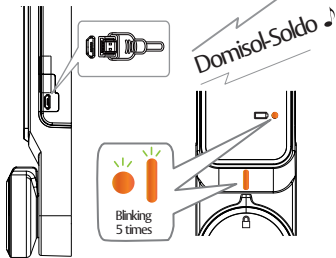
b Press the "Master Code" and # button

c Press 0 and # button for timer opening off  
- Orange LED blinks 2 times with melody sound "Ra-Si~"

# Emergency opening

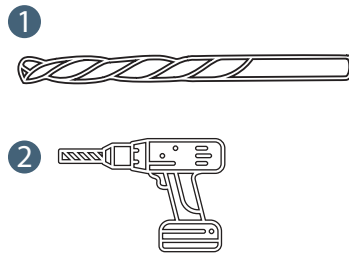
## Before emergency opening

Make sure that the product is working by supplying external power to the main Micro 5-pin power cable.



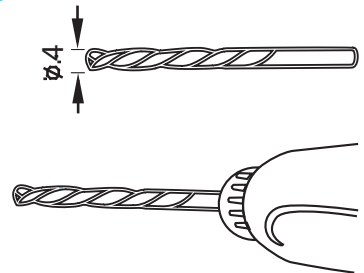
If external power is not supplied, prepare "forced opening drill bit".

0



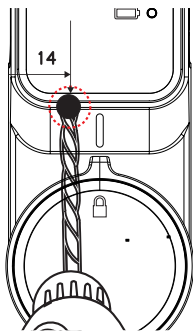
Prepare 4mm "forced opening drill bit" and electric drill.

1



Connect the prepared 4mm "forced opening drill bit" to the electric drill.

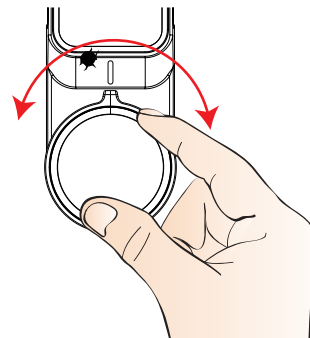
2



Drill the hole horizontally to the point where it should be drilled.

- 14mm from the left
- just below the black plastic cover
- 15mm~18mm depth from start point.

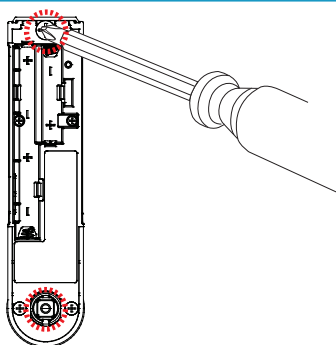
3



If drilled properly, there should be no difficulty in opening.

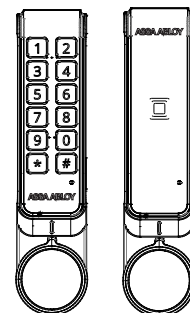
- If the handle doesn't rotate, it needs to be drilled deeper.

4



Open the door and loosen the screws and nuts on the back of the door to remove the product.

5



Please contact Unilock to return the broken locks.

ASSA ABLOY Opening Solutions Australia  
235 Huntingdale Road, Oakleigh VIC 3166, Australia  
Tel: 1300LOCKUP(1300 562 587) Web: [assaabloy.com/au/en](http://assaabloy.com/au/en)

For warranty terms and conditions, please visit [assaabloy.com/au/en](http://assaabloy.com/au/en) or call 1300WARRANTY

**ASSA ABLOY**  
Opening Solutions

Experience a safer  
and more open world