



ML55 Series Digital Cam Lock

ASSA ABLOY
Opening Solutions

Experience a safer
and more open world

ASSA ABLOY

Opening Solutions

ASSA ABLOY in brief

ASSA ABLOY is the global leader in door opening solutions, dedicated to satisfying end-user needs for security, safety and convenience.

ASSA ABLOY is represented in all major regions, on both mature and emerging markets, with leading positions in Australia and much of Europe and North America. In the rapidly growing electromechanical security sector, the Group has a leading position in fields such as electromechanical products, access control, identification technology, automatic doors, commercial, government and institutional security.

Since its founding in 1994, ASSA ABLOY has grown from a regional company to an international group. As the world's leading lock group, ASSA ABLOY offers a more complete range of door opening solutions than any other company on the market.

ASSA ABLOY Australia

Local manufacturing

ASSA ABLOY Australia has long been developing innovative electromechanical products. We focus on extensive market research, developing products that exceed market demands.

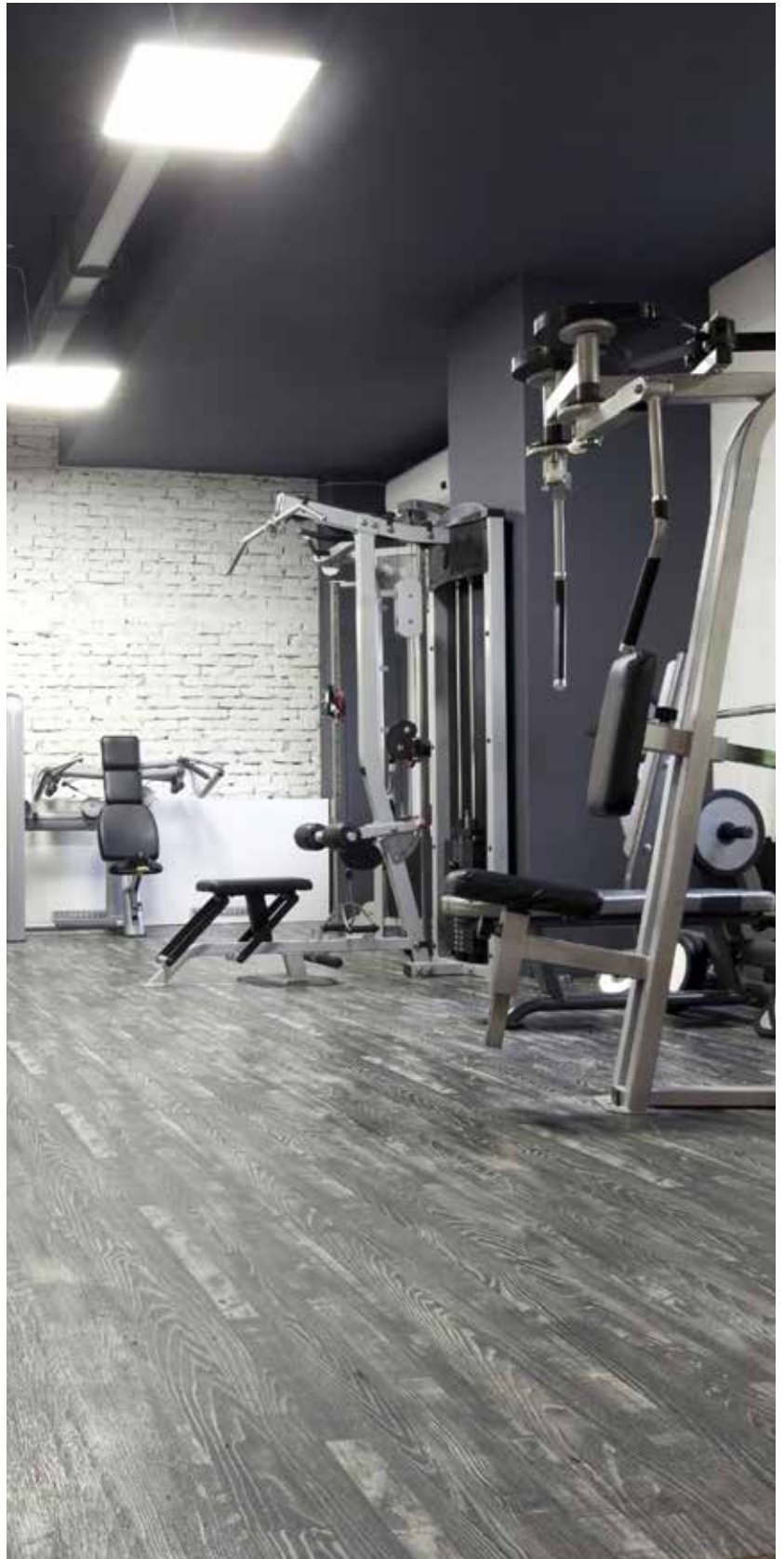
ASSA ABLOY Australia boasts a precision manufacturing facility and innovative design centre in Melbourne.

Extensive product range

ASSA ABLOY Australia offers one of the most comprehensive electromechanical product ranges in the Australian market today. We specialise in supplying door solutions for all market segments and industries. Our range includes electromechanical solutions for almost any application.

Premium quality and reliability

Our product range is designed and manufactured to surpass the highest Australian and international standards. The Melbourne manufacturing facility includes a state-of-the-art NATA accredited test laboratory. This ensures the undisputed quality and reliability known on the market today.



ML55 Series Digital Cam Lock

ASSA ABLOY's new digital cam lock range, the ML55 Series, has set a new industry benchmark for safety, security, and convenience. Suitable for government, commercial, and institutional organizations.

It comes with Digital PIN Keypad offering a range of features suitable for the locker applications such as:

- Schools
- Offices
- Leisure centres
- Sports clubs
- Health clubs

The Digital PIN Keypad can be easily mounted vertically to suit your locker design.

ASSA ABLOY's digital cam locks offer safety security and convenience for your lockers and their contents.

Features:

- Attractive slim line design
- Battery status LED
- Lock status LED
- Standard Alkaline batteries, 3 x AAA
- Micro USB battery back up
- Suits doors up to 23mm thick
- 3mm thick stainless steel cam
- Time opening function
- Increased Overload Protection
- Handle position detection and Motor switch detection

Digital PIN Keypad Features:

- 4-12 digit Master PIN
- 4-12 digit User PIN
- 4-12 digit Technician PIN
- Private Code or Public Change Code Mode (similar to hotel safe)
- Sound Mode - On or Off
- Temporary wrong code lockout



ML55PA - Digital PIN Keypad Functions

Master Code

- Unlocks the cam lock (the cam lock will remain opened after use with the Master PIN Code)
- Enables changing the Master PIN Code
- Enables changing the User PIN Code (in Private Mode)
- Deletes the User PIN Code automatically

User Code

- Unlocks the cam lock (automatically lock in Private Mode when user close the locker and turn the knob to the lock position)
- Enables changing the User Code

Technician Code

- Unlocks the cam lock (automatically lock in both Mode when user close the locker and turn the knob to the lock position)
- Not able to change the User Code

Private Mode

- The cam lock starts in a locked state
- Open the cam lock by using a registered PIN code on the front keypad
- The cam lock will remain unlocked until user turn the knob back into locked position

Public Mode

- The cam lock starts in an unlocked state
- The user enters their own personal 4-12 digit PIN code, this will lock the cam lock
- Unlock the cam lock by using the same PIN code again. This leaves the cam lock in the unlocked state
- This PIN code is then erased and ready for the next new user
- This function is used for short term, multi occupancy applications e.g. Locker in a fitness club



Time Opening Function

- Ensures lock is unlocked after a predetermined amount of time has passed, ideal for public facilities

Increased Overload Protection

- Prevents the knob from becoming loose when a certain amount of force is applied

Handle Position Detection And Motor Switch Detection

- Disables the keypad when the cam lock is in unlocked status

New Locking Mechanism

- Enhances the camlock functionality

ML55PA - Digital PIN Keypad Vertical Specifications

Product Details

Part Number ML55B00107 - ML55PA Digital PIN Keypad Vertical

Size 158mm (High) x 40mm (Wide) x
23mm (Deep, Body), 31mm (Deep, Knob)

Material Die-cast (Body & Knob), ABS (Front)

Operating Temperature: -20°C ~ +70°C
Humidity: 0-90%

Credential Levels Master: 1 PIN code, 4-12 digit
User: 1 PIN code, 4-12 digit
Technician: 1 PIN code, 4-12 digit

Battery / Life 3 AAA Alkaline Batteries (not included)

1.5 Years (Using 10 times a day)

Salt Spray Tested to 96 hours

Compliance

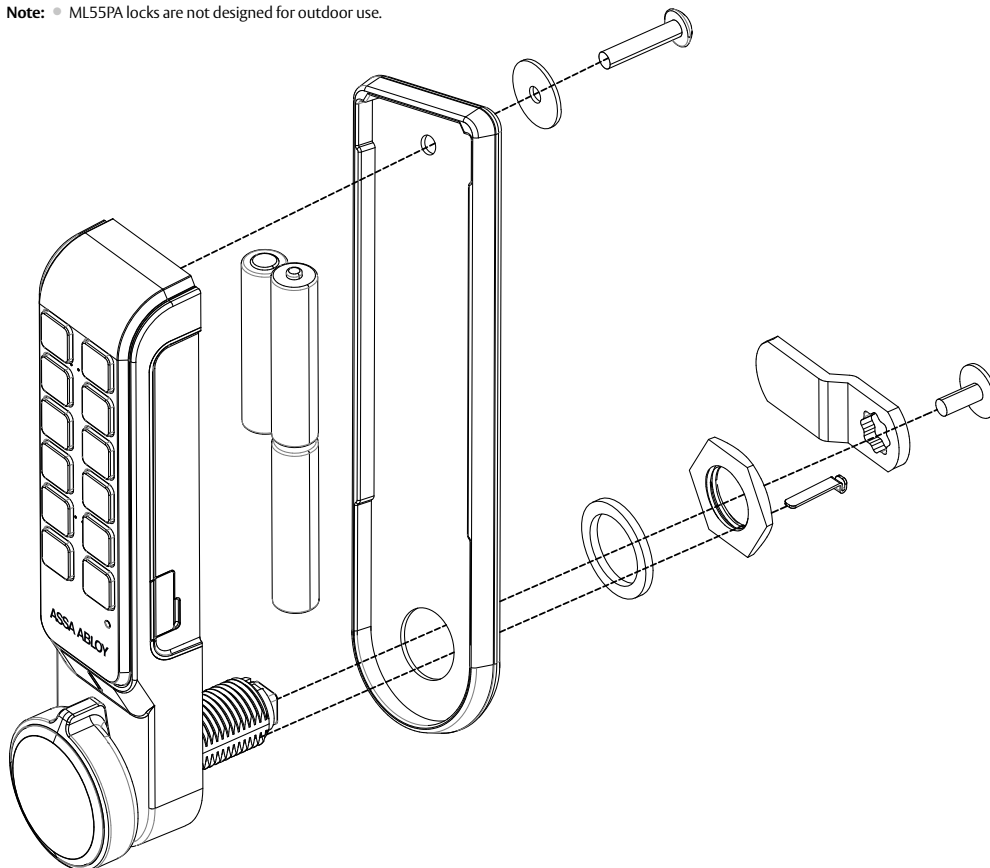


Door Thickness 1 - 23mm

Cams 2 x Standard 3mm thick stainless steel cams
supplied one straight cam, one offset cam.
See page 6 for dimensions

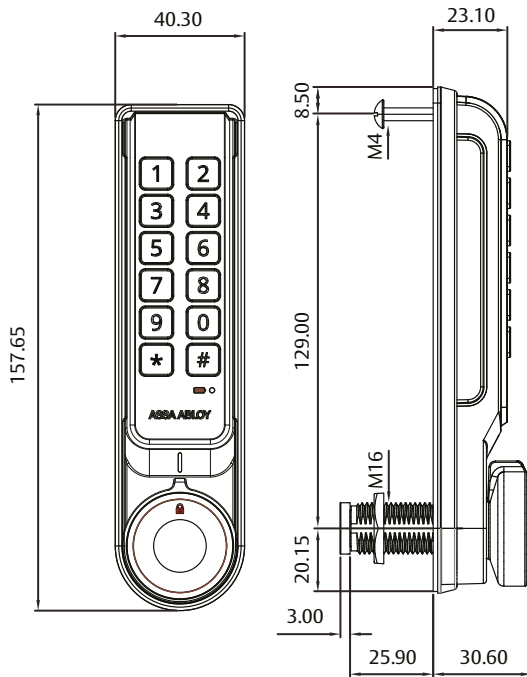


Note: • ML55PA locks are not designed for outdoor use.

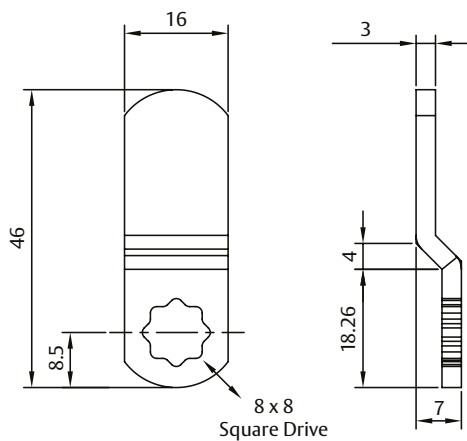


ML55PA - Digital PIN Keypad

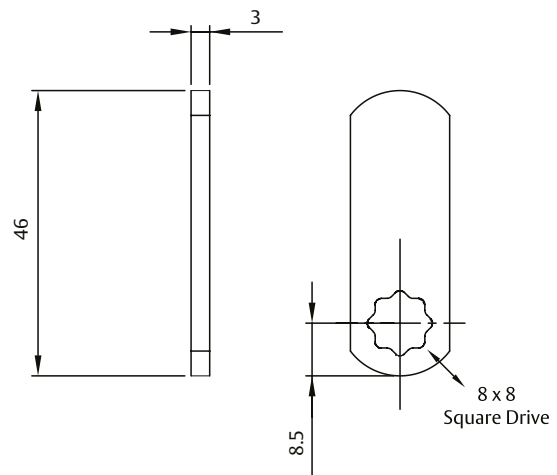
ML55B00107- ML55PA Digital PIN



Offset Cam



Straight Cam



Note: Both the offset and straight cam are included with all cam locks.
All dimensions in millimeters.

ASSA ABLOY is the global leader in door opening solutions, dedicated to satisfying end-user needs for security, safety and convenience.

ASSA ABLOY is represented in all major regions, in both mature and emerging markets, with leading positions in Australia, Europe and North America.

As the world's leading lock group, ASSA ABLOY offers a more complete product range of door opening solutions than any other company on the market.



The ASSA ABLOY 10 Year Mechanical Warranty

Our belief that we manufacture the finest premium products available in today's market place is backed by the ASSA ABLOY 10 Year Mechanical Warranty, ensuring that ASSA ABLOY continues to keep Australians safe by delivering security and peace of mind.

For warranty terms and conditions, please visit

assaabloyopeningsolutions.com.au
or call **1300WARRANTY**

Head Office

ASSA ABLOY Australia Pty Limited
235 Huntingdale Road
Oakleigh Victoria 3166
Australia
+61 1300 562 587

assaabloyopeningsolutions.com.au

Disclaimer

Whilst every effort has been made to ensure that the information (including product images and drawings) contained in this brochure is accurate at the time of publication, ASSA ABLOY Australia Pty Limited ("ASSA ABLOY") recommends that you consult ASSA ABLOY or its agents prior to placing an order to ascertain current information on specific products, as ASSA ABLOY reserves the right to make changes without notice. ASSA ABLOY will not be liable for any injury, loss or damage whatsoever, arising from any errors or omissions in the information contained in the brochure or arising from the use or application of the information contained herein. © 2023 copyright by ASSA ABLOY All rights reserved

