

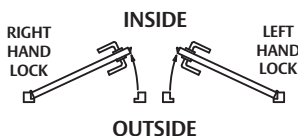


ASSA ABLOY

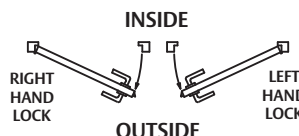
3P70 SERIES MORTICE LOCK MOUNTING INSTRUCTIONS

HAND OF DOOR ACCORDING TO ENGLISH PRACTICE

DOOR OPENING IN



DOOR OPENING OUT



CONTENTS

- 3P70 series mortice lock
- Cover plate
- Strike
- Strike box
- Spindle (x2)
- Spindle spring (x2)
- Cylinder retaining pin (x2)
- M4 x 8 screw (x2)
- 8g x 32mm screw (x4)
- Metal frame strike screw (x2)
- Function setting tool
- Template / Instructions

TOOLS REQUIRED

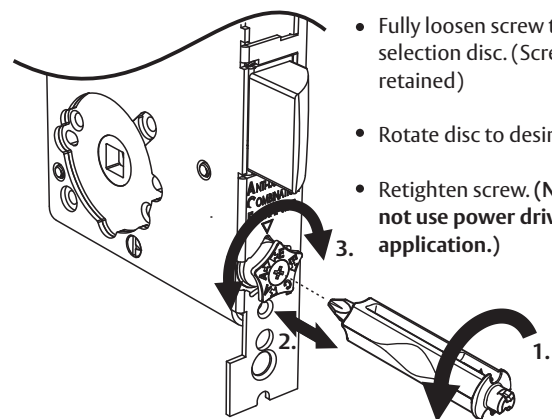
- Ø20 & Ø22mm Spade bit
- Electric drill
- Chisel - 25mm or smaller
- Hammer
- Phillips head screwdriver
- Ruler / Measuring tape
- Pencil
- Masking tape

Please ensure that all necessary safety precautions are undertaken when installing this lockset.

SETTING OF LOCK FUNCTION

1

SETTING OF HUB FUNCTION



- Establish functional operation for the required side of the door.
- Fully loosen screw to free hub selection disc. (Screw will be retained)
- Rotate disc to desired position.
- Retighten screw. (Note: Do not use power driver for this application.)

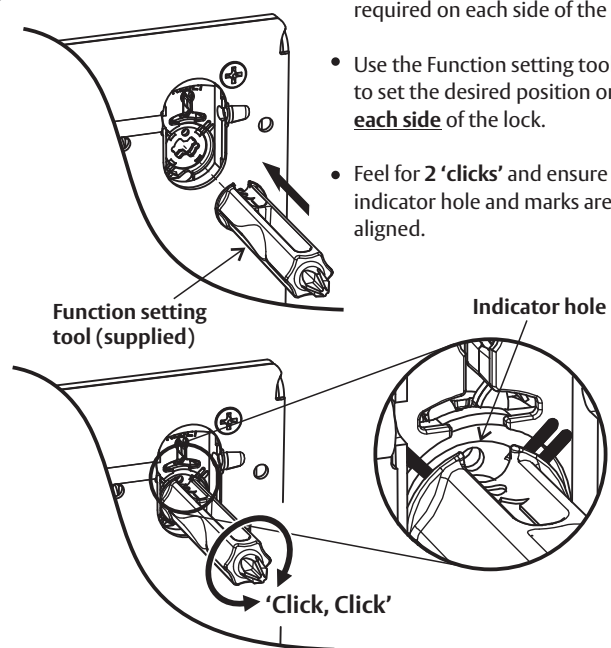


⇐E	Escape (Left side) - Left side handle set to Escape
E⇒	Escape (Right side) - Right side handle set to Escape
C	Combination - both handles lockable
⇐A	Anti-lockout (Left side) - Left side handle set to Anti-lockout
A⇒	Anti-lockout (Right side) - Right side handle set to Anti-lockout

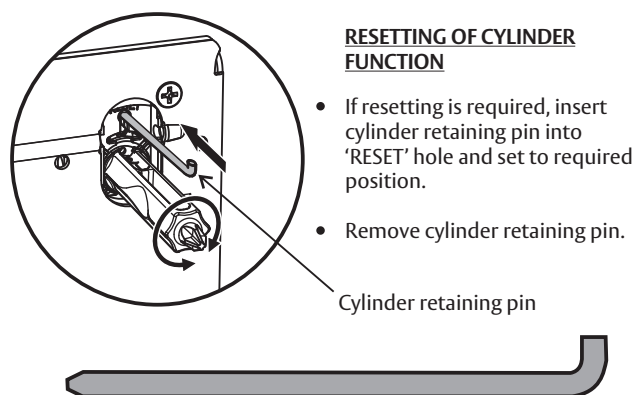
Anti-lockout - Retracting the bolt by inside lever handle, key or closing the door will 'kick-off' the locking feature, and unlock outside lever handle.
To reset Hub Function - The Cylinder Function Position must be at '0', 'I' or 'II', see Section 2 for setting of Cylinder Function.

2

SETTING OF CYLINDER FUNCTION



- Establish the cylinder function required on each side of the lock.
- Use the Function setting tool to set the desired position on **each side** of the lock.
- Feel for 2 'clicks' and ensure the indicator hole and marks are aligned.



RESETTING OF CYLINDER FUNCTION

- If resetting is required, insert cylinder retaining pin into 'RESET' hole and set to required position.
- Remove cylinder retaining pin.

Cylinder Function Setting Positions

	Lock side		Lock side
	0 Passage mode		0 Passage mode
	I Lock/Unlock mode (Unlocked position)		I Lock/Unlock mode (Unlocked position)
	II Retracts latch by key or turn		II Retracts latch by key or turn
	III Lock/Unlock mode (Locked position)		III Lock/Unlock mode (Locked position)

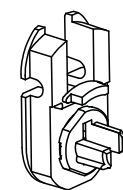
Part No.	Function	Hub Setting	Outside Setting	Inside Setting	Turn Adaptor
3P72SS-E11E Old P/No. 3572Z#SC	Classroom Lock Outside - Handle locked/unlocked. Key locks/unlocks. Inside - Handle always free.	E	I	I	N/A
3P72SS-E23E Old P/No. 3572X#SC	Storeroom Lock Outside - Handle rigid. Key retracts latch. Inside - Handle always free.	E	II	III	N/A
3P72TSS-E21E Old P/No. 3572XT#SC	Entry Door Lock Outside - Handle rigid. Key retracts latch. Inside - Handle always free. Turn locks/unlocks outside.	E	II	I	3P72-STA01
3P72ESS-A11N Old P/No. 3572EA#SC	Escape Privacy Latch - Anti-lockout Outside - Handle locked/unlocked. Emergency turn locks/unlocks. Inside - Handle always free. Turn locks/unlocks outside.	A	I	I	3P72-ETA01
3P72SS-C11D Old P/No. 3574ZZ#SC	Double Cylinder Glass Door Lock Outside - Handle locked/unlocked. Key locks/unlocks. Inside - Handle locked/unlocked. Key locks/unlocks.	C	I	I	N/A
3P72ESS-C11N Old P/No. 3574ET#SC	Privacy Latch Outside - Handle locked/unlocked. Emergency turn locks/unlocks. Inside - Handle locked/unlocked. Turn locks/unlocks outside.	C	I	I	3P72-ETA01
3P72SS-E21D Old P/No. 3572XZ#SC	Double Cylinder Escape Lock Outside - Handle locked/unlocked. Key retracts latch. Inside - Handle always free. Key locks/unlocks outside.	E	II	I	N/A
3P72TSS-A11E Old P/No. 3572WA#SC	Escape Office Lock - Anti-lockout Outside - Handle locked/unlocked. Key locks/unlocks. Inside - Handle always free. Turn locks/unlocks.	A	I	I	3P72-STA01
3P72VSS-E11E Old P/No. 3572M#SC	Anti-Vandal Classroom Lock Outside - Handle locked/unlocked. Key locks/unlocks/retracts latch. Inside - Handle always free.	E	I	I	3P72-VTA01

- Denotes Left (L) or Right (R) lockset

For a full list of all functions visit lockweb.com.au or contact 1300 LOCK UP (1300 562 587)

3

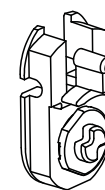
TURN KNOB ADAPTORS (If required)



3P72-ETA01
Emergency (E)

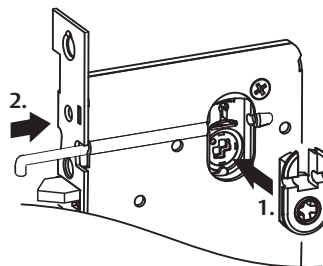


3P72-STA01
Standard (T)

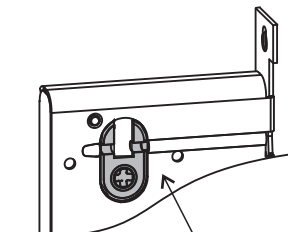


3P72-VTA01
Anti-Vandal (V)

INSTALLATION OF STANDARD TURN ADAPTOR



- Install turn adaptor to inside of lockset, ensuring cam is engaged.
- Insert retainer pin to secure adaptor in lock.



EMERGENCY TURN ADAPTOR

- Ensure lock is in Position 1 and both sides are in the UNLOCKED mode.
- Install Emergency turnknob adaptor (3P72-ETA01) into the side of lock as shown only.
- Ensure through slot is vertical when in UNLOCKED mode.
- Insert retainer pin to secure adaptor in lock.

DOOR PREPARATION AND LOCK INSTALLATION

1 DOOR PREPARATION

Detach template from box

Mark centreline of door

Mark position for holes

Drill 7 Holes - 22mm Dia 90mm Deep

- Mark centreline of door thickness on door edge.
- Detach template from the box and position on door edge at desired height. Secure with masking tape.
- Mark drilling positions on door centreline through slots in template.
- Remove template and drill mortice to a depth of 90mm.

2 DOOR PREPARATION

Scribe around Forend

4mm Deep

- Ease out and clean mortice cavity before inserting lock.
- Insert lock and scribe around Forend for size of recess.
- Remove lock and chisel recess 4mm deep. Cover plate must be flush with edge of door.
- Align EDGE A of template with bottom of Cover plate recess. Secure with tape. Mark required furniture hole centres on both sides of door.
- Drill required furniture holes from both sides of door.

3 INSTALL LOCKSET

1. Cylinder assembly

2. Cylinder retaining pin

3. Cover plate

Rotate Bolt to required handing

- Rotate bolt head to suit latching direction.
- Secure mortice lock into door using 2 screws provided.
- Insert cylinder(s) and secure with cylinder retaining pin, as required.
- Install cover plate and secure with 2 x M4 screws provided.

4 INSTALLING STRIKE

Strike

Strike Box

Jamb

- Mark and chisel door frame for strike.
- Prepare 16mm deep recess in door frame for strike box.
- Secure strike and strike box with 2 screws provided.

5 SPINDLE ASSEMBLY

- Attach spindle spring to rear of spindle.
- Insert spindle(s) into lock.
- Assemble furniture as per furniture instructions.

LOCKWOOD GUARANTEE

ASSA ABLOY Australia Pty Limited ("ASSA ABLOY") warrants its Lockwood products against defects in workmanship and materials, subject to the limitations and exclusions set out in this Warranty. If, within the normal working life of a product, it is found to be defective, and none of the limitations and exclusions set out in this Warranty apply, ASSA ABLOY will supply the same or equivalent product free of charge. This is the only remedy granted by ASSA ABLOY under this Warranty. Limitations: All electrical and electronic components used in ASSA ABLOY's Lockwood range of products (excluding batteries) are guaranteed for a period of 12 months from the date of proof of purchase, unless stated otherwise. Exclusions: This Warranty does not cover: 1. Damage to or malfunction or failure of the Lockwood product caused or contributed to by: (a) improper installation or failure to follow fitting instructions; (b) improper maintenance; (c) fair wear and tear; (d) any modification or repair which has not been authorized by ASSA ABLOY; (e) use of substitute or replacement parts or cylinders other than genuine ASSA ABLOY parts or cylinders; or (f) use of batteries other than those specified by ASSA ABLOY. 2. The cost of: (a) removal and/or replacement of the Lockwood product; (b) freight and/or travelling time; (c) replacement batteries; or (d) any modification or repairs to a Lockwood product, unless authorised by ASSA ABLOY. 3. Damage to or deterioration of the plated finishes Florentine Bronze, Architectural Bronze, Polished Brass, Gold and Satin Brass, which are classified as soft finishes, and are subject to deterioration under some environmental conditions. 4. Personal injury, property damage or economic loss, however caused. Symmetry® 5 Year Finish Warranty: ASSA ABLOY Australia Pty Limited will replace five-year branded Symmetry product if within five years from the proven date of purchase it tarnishes, discolours or corrodes when properly installed and subject to no more than fair wear and tear. Symmetry® Everbrass® Warranty: Everbrass product is coated both on the exterior and interior surfaces with a lifetime anti-tarnish finish. ASSA ABLOY Australia Pty Limited will replace Everbrass branded product if it corrodes, tarnishes or discolours when properly installed and subject to no more than fair wear and tear. This Warranty is in addition to and not in substitution for any rights of the purchaser under the Trade Practices Act and state or territory legislation.